

Wiman 4G/LTE Gateway Series is smart RS485/IO/LoRa to 4G/LTE Gateway, Expand your Data communication over wireless networks by 4G Gateway with Secure and two-way communication, without in-depth knowledge of Protocol Concepts. Our Smart Modbus Gateways Series replaces the complex approach of sending the Modbus slave/IO data to the centralized server, either single or multiple slaves/nodes. The device has option to configure different interval settings can assign based on Priority. Support multiple Protocols too, Like TCP or Http or MQTT mode with SSL for Secure. All the Parameter are Remotely configurable via FTP, HFS, PC Utility, IP Utility or Server IP Commands, all configurations can update remotely too. Our generic device can able to read from any Standard Modbus RS485 Slave devices. Edge features will help to avoid dumping packets at server end, Inbuilt Logger enable during Network/Server Disconnection. Based on your requirements, we offer different models based on features and IO. Wiman Assure that we won't lose single Packet even in Disconnection.



Limitless Application

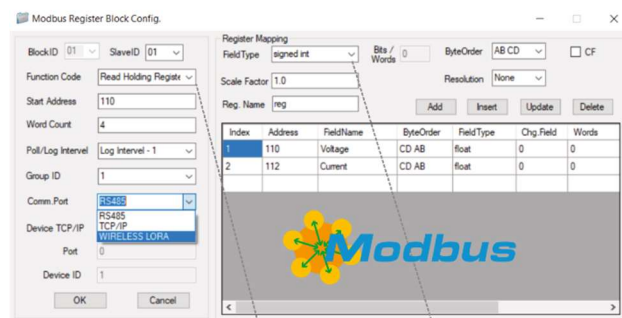
- ✓ Smart Meter Reading, Utility
- ✓ Power Monitoring and Control
- ✓ PLC, Automations, Industry 4.0
- ✓ Temperature Alerts, Indicators, Base Stations
- ✓ Pump Control, Flow Measurements
- ✓ SCADA, Solar Monitoring, Windmill
- ✓ Central Monitoring and Control Systems
- ✓ ATM, Cold Storage, Home Automation and more..

Highlight Features

- ✓ Intelligent RS485/LoRa/ IO and Data Logger Enabled
- ✓ Configurable Multiple Slave IDs, Selectable Address Range
- ✓ Modbus Datatype Conversion, Byte orders, Scale Factor config
- ✓ Upto 64 Slaves, Combined RS485, TCP Modbus & LoRa Nodes
- ✓ Read upto 2400 Words of Modbus Data – Dynamically
- ✓ Transparent Command for Modbus Read/Write Operations
- ✓ LoRa Options – Converters, Repeaters and IO Nodes
- ✓ Data Logger Enable during Server/Network Disconnection
- ✓ Configurable TCP/Http/MQTT Mode, GET/POST Methods
- ✓ SSL Option to Enable Highly Secured, and Multiple Security Options
- ✓ Configurable JSON Format for Parameter Packetization
- ✓ Config Polling Options – Scheduling, Query, DI, Offline Log Based
- ✓ Edge Trigger Options to Set Conditions to Relay, Modbus Write
- ✓ SMS Options for Send/Receive Configuration, Alerts, Status, Control
- ✓ Local Console for Tracing Data Packets (Mirror of Server Packet)
- ✓ Monitor the Server Transactions – Tx/Rx Packets, Response time etc

Model/Info	WT410M	WT400M	WT405M
Name	4G-LITE	4G-PRO	4G-LPRO
ADI IN 1	0 to 24V	0 to 24V	0 to 24V
ADI IN 2	YES / *PULSE	0 to 24V	0 to 24V
DI IN 3	-	0 to 24V	0 to 24V
DI IN 4	-	DI, PULSE	DI, PULSE
4 to 20mA IN	YES / *RELAY	YES	YES
Relay	* YES	YES	YES
RTU RS485	YES	YES	YES
TCP Modbus	-	YES	YES
LoRa Modbus	-	-	YES
Logger Size	17600 Records	17600 Records	17600 Records

Modbus Master Loaded, Easy and Simple !



Configure in
60
Seconds

data in
30
Seconds

We Connected with Core Technology !
Generic Modbus IoT Gateway Series

LITE
PRO
LPRO

Technical Specification

GSM Specification

LTE FDD Band	Asia - B1/B3/B5/B8 Europe - B1/B3/B5/B7/B8/B20/B28
LTE-TDD Band	Asia - B34/B38/B39/B40/B41 Europe - B38/B40/B41
GSM Band	Asia - B3/B8 Europe - B2/B3/B5/B8
Bandwidth	Asia - 1.4/3/5/10/15/20 MHz Europe - 1.4/3/5/10/15/20 MHz
SIM Interface	Internal SIM 1.8V & 3V

General Communication

Transmit Protocol	TCP, HTTP, MQTT - SSL
Http Methods	Configurable GET/POST
Protocol Format	Configurable JSON / CSV String Format
Device Configuration	SMS / PC Utility / FTP / Server IP Commands
RS485 Modes	Transparent / Modbus Polling (* RS232)
OTA	FTP/HFS/TCP Utility/SMS /IP Command
LoRa	Inbuilt LoRa, Enable Wireless RS485

Serial Specification

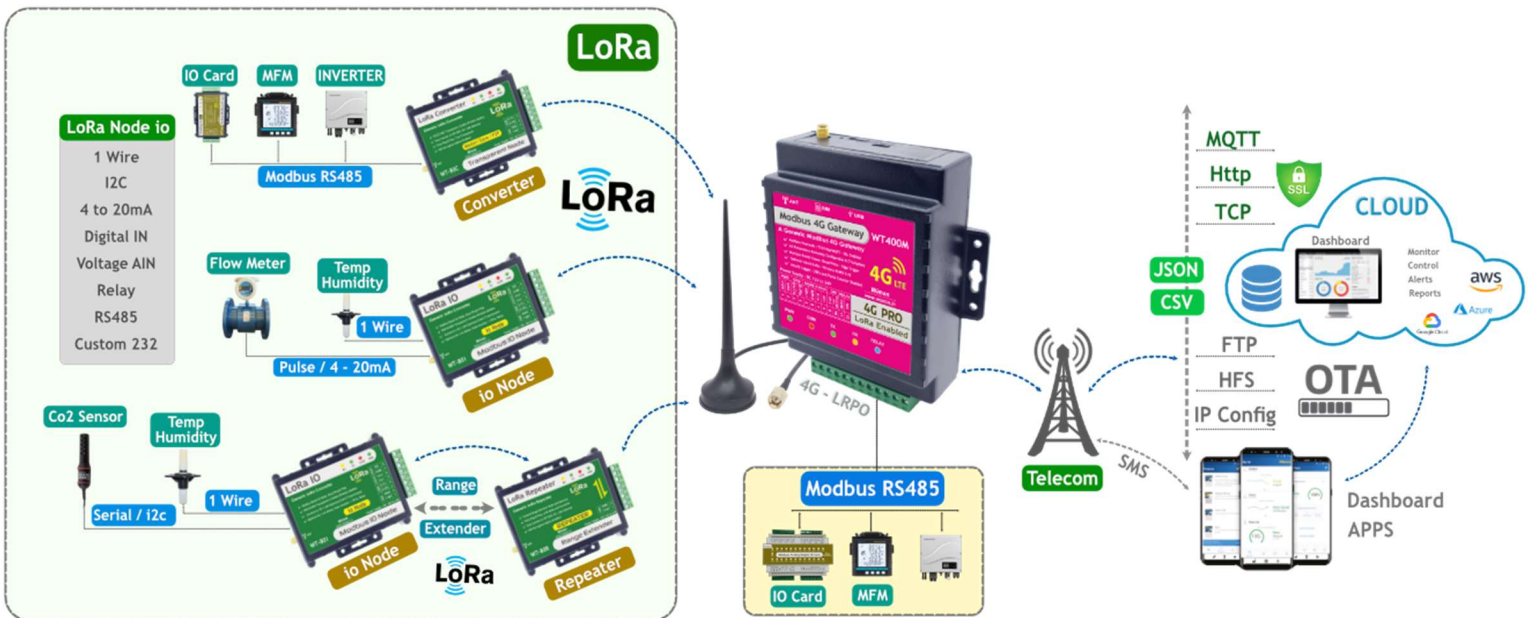
Interface	RS232 or RS485
Baud Rate	2400, 4800, 9600, 19200, 38400, 57600, 115200 bps
Data Bits & Parity	Bits: 7/8 bits, Parity: None/Even/Odd

Interfaces

Power Supply	12V to 24V DC (Reverse Polarity Protection)
Input Port	2 Chanel (0 to 24V) Analog/Digital Voltage Input 2 Chanel (0 to 24V) Pure Digital Input 1 Chanel (4 to 20ma) Current Input 1 Chanel RELAY Output
LED Indicator	Power, GSM, Modbus Communication Status
RS485 Port	Multiple Modbus Slave Device Connection
USB TYPE C Port	PC Utility Configuration
Antenna	External

General Specifications

Connector LITE	Micro Fit-5.0 (8 pins – 2 Power/2 Modbus/3 IO)
Connector PRO/LPRO	Micro Fit-5.0 (12 pins – 2 Power/2 Modbus/8 IO)
Dimension	100mm x 85mm x 24mm (L x W x H)
Weight	160 grams
Operating Voltage	12V - 24V DC
Operating Temperature	Operating: -30C to +85C



*We pursue a policy of continuous research and product development, Specifications and features are subject to change without notice

Modbus IoT Gateway Series Available in.. Stay Connected with Core Manufacture !

Manufacture

White Labeling

Competative Pricing

Product Customization



Get More Info..



www.wiman.in



sales@wiman.in



044-48536045